

INSTRUCTIONS
FOR INSTALLING
PONTIAC
TRAFFIC LIGHT VIEWER



PONTIAC MOTOR DIVISION
GENERAL MOTORS CORPORATION
PONTIAC, MICHIGAN

A-5009

SIGNAL LIGHT VIEWER

The Signal Light Viewer, package number 984584, contains the following parts which should be checked before starting the installation:

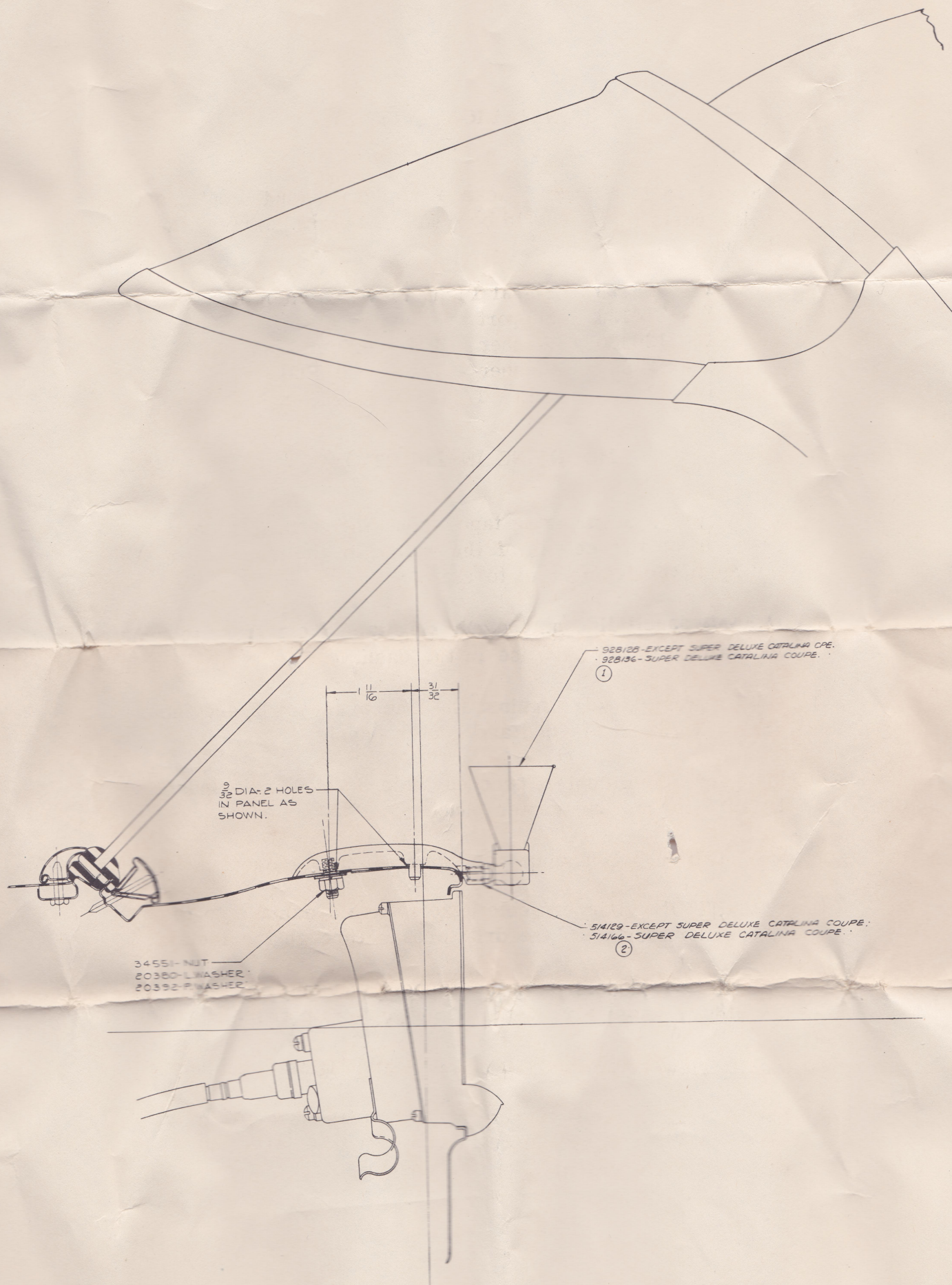
1 - 928128	Signal Light Viewer Assembly
1 - 514129	Support
1 - 120380	Washer - 1/4 Medium Lock
1 - 120392	Washer - 1/4 Small Flat
1 - 134551	Nut - 1/4 20 N.C. 2 Hex

MOUNTING INSTRUCTIONS

1. Cut a piece of masking tape about three inches long and place it on the center of the raise in the dash over the speedometer from front to rear.
2. Draw a pencil line on the masking tape from front to rear in the center of the raise in the dash.
3. Hold a straight edge against the face of the dash and measure in $31/32$ of an inch and center punch.
4. Measure from center punched hole in toward windshield $1-11/16$ inches and center punch.
5. Drill two $9/32$ inch diameter holes, using a gooseneck drill.

CAUTION: Use extreme care to avoid damage to the speedometer when the drill breaks through the metal.

6. On Catalina Models paint the support and outer periphery of the viewer assembly to match the upper instrument panel.
7. Install viewer assembly in bracket and tighten securely.
8. Install traffic light viewer support, placing stud in front hole and plain dowel in rear hole. Hold securely in place with nut, lock washer, and flat washer.



928128-EXCEPT SUPER DELUXE CATALINA COPE.
928136-SUPER DELUXE CATALINA COUPE.

①

514129-EXCEPT SUPER DELUXE CATALINA COUPE.
514146-SUPER DELUXE CATALINA COUPE.

②

$\frac{9}{32}$ DIA. 2 HOLES
IN PANEL AS
SHOWN.

34551-NUT
20380-L WASHER
20392-P WASHER